

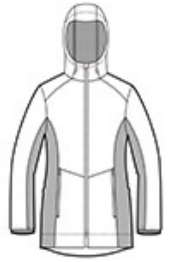


Enjoy active pursuits in this flexible, water-resistant, budget-friendly jacket that features a hood for true all-season performance.

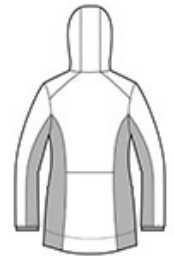
- 100% polyester knit shell bonded to a water-resistant film insert and a 100% polyester mesh interior
- 1000MM fabric waterproof rating
- 1000G/M<sup>2</sup> fabric breathability rating
- Longer length for additional coverage
- Three-panel hood with adjustable locking drawcord
- Reverse coil two-way zipper
- Front zippered pockets
- Elastic binding at cuffs
- Open drop tail hem

**CARE INSTRUCTIONS**

Machine wash cold. Gentle cycle. Tumble dry low. Cool iron if needed. Do not bleach. Do not dry clean.



front



back

**HOW TO MEASURE**



**BUST**  
With arms down at sides, measure around the upper body, under arms and around the fullest part of the bust.

**SIZE CHART**

|      | XS    | S     | M     | L     | XL    | XXL   | 3XL   | 4XL   |
|------|-------|-------|-------|-------|-------|-------|-------|-------|
| Size | 2     | 4/6   | 8/10  | 12/14 | 16/18 | 20/22 | 24/26 | 28/30 |
| Bust | 32-34 | 35-36 | 37-38 | 39-41 | 42-44 | 45-47 | 48-51 | 52-55 |

**COLOR INFORMATION**



Deep Black PMS NTR Black  
 Dress Blue Navy CPMS 533 C  
 Grey Steel/Deep Black PMS 7540 C